

SEERS

Innovation Is Our Promise

ECO INSTANT WATER (i) HEATER

MODEL: F23HT, R23RT



INSTALLATION MANUAL

- * Please read manual carefully before installation.
- * SEERS reserve the rights to change the contents and illustrative diagrams without prior notice.

CONTENT

Introduction	1
Important Safety Information	2
Part Contents Checklist	4
Parts Description	5
Hand Shower Installation Guide	7
Water requirements	8
Installation	9
Operating Mode	10
Model Specification	11
Troubleshooting	12

INTRODUCTION

Congratulation!

Thank you for making excellent choice by purchasing the Seers Eco Instant Water Heater. This is low power consumption water heater. The design is carefully crafted for its distinctive use in all household, hotel and any applicable vicinity. User safety is our priority in accordance to be the first ever water heater without submersible electric heating coil. This product has obtained numerous patents and certification in design, invention and utility model.

Read all of these instructions and retain this guide for later use.

Pass on this guide in the event of change of ownership of the installation site.

All warnings, cautions and instruction contained in this guide must be followed.

When this appliances has rejected the end of its serviceable life, its should be disposed of in a safe manner, in accordance with current local authority recycling. or waste disposal policy.

This appliance is not intended for use by persons (including children) with reduced physical, sensory or mental capabilities, or lack of experience and knowledge, unless they have been given supervision or instruction concerning use of the appliance by a person responsible for their safety.

Children should be supervised to ensure that they do not play with the appliance.

IMPORTANT SAFETY INFORMATION

THIS APPLIANCE MUST BE EARTHED, TO MAKE SURE EARTH WIRE AND HEATER UNIT HAVE PROPER GROUNDING IN HOUSEHOLD.

Earthing requirements

The earthing installation should be carried out in accordance with the local wiring regulation. Where EARTHING of the premises is not evident, it is necessary to run an EARTH CONDUCTOR and solidly connect an earth rod local to the installation. As it's a safety factor, earthing is essential and mandatory. It's an electrical connection between the exposed metallic parts of an electrical appliance or installation and the earth, regarded to have zero potential. Proper earthing provides an alternative and easy path for leakage or faulty current to flow. It ensures that any exposed conductive part of the appliance does not reach a dangerous level of potential or voltage that endangers the user's life. A proper earthing system should have least electrical resistance, good corrosion resistance and ability of dissipating high faulty current.

Consideration should be given by the young, the elderly, the infirm or anyone inexperienced in the correct operation of the control as well as children should be supervised to ensure that they do not play with the appliances.

When the Shower is used by someone such as child, elderly person, sick person and physically handicapped person, the concern person is kindly requested to pay attention and check the shower temperature by using hand from time to time. User is advised to test and adjust the water temperature before bathing.

WARNING: Metallic / chromed hose and conductive control valve shall not be used.

Test the build-in RCD at least once a month.

The spray head shall be descaled regularly.

WARNING: Do not switch on the heater if there is a possibility that water in the heater is frozen.

WARNING: Whenever there's a trip, switch OFF the incoming supply and turn ON again than press the reset button for returning to normal operation.

IMPORTANT SAFETY INFORMATION

Cautions !

- 1) The unit must be installed by qualified electrician and plumber.
- 2) The shower heater unit must be connected to its own independent electrical circuit.
- 3) Before beginning any work on the electric installation be sure that main breaker panel switch is "Off" to avoid any danger of electric shock. All mounting and plumbing must be completed before proceeding with electrical hook-up. Lead the power cable from the indoor fuse distributor board or Miniature Circuit Breaker (MCB) to a 10mA RCD and from RCD to ON/OFF Double-Pole switch outside the bathroom.

Recommended MCB rating:

Model	MCB rating
F23HT	20A
R23RT	20A

- 4) The unit must be permanently connected to the electricity supply through a double-pole linked. Switch having a contact of separation of at least 3mm in all poles incorporated in fixed wiring.
- 5) This switch must be out of reach of a person using a shower.
- 6) The use of a plug and socket is not recommended.
- 7) Correct size of wire conductor corresponding to different electrical loading should be used.

Recommended power cable size:

Model	Cable size
F23HT	4mm ²
R23RT	4mm ²

- 8) In order to avoid a hazard due to inadvertent resetting of the thermal cutout, this appliances must not be supplied through an external switching device, such as a timer, or connected to a circuit that is regularly switched on and off by the utility.
- 9) For ease of servicing, the unit must always be mounted on the surface of tiled walls. Never conseal the unit and MUST be positioned vertically.
- 10) The unit operates at a minimum water flow rate of 2.0 litre/min and maximum working pressure of 4 bar. For direct connection from the water storage water tank, the unit must have an installation minimum 1.5m below the water storage tank.
- 11) The unit shall not be connected to any tap or fitting and those not specified.

PART CONTENTS CHECKLIST

Model: R23RT , F23HT



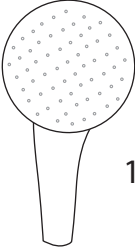
1 x Seers Heater Unit



4 x Green Wall Plug & Screw Set



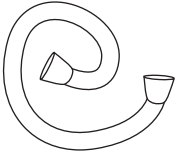
1 x Shower Holder complete with sliding bar



1 x Hand Shower



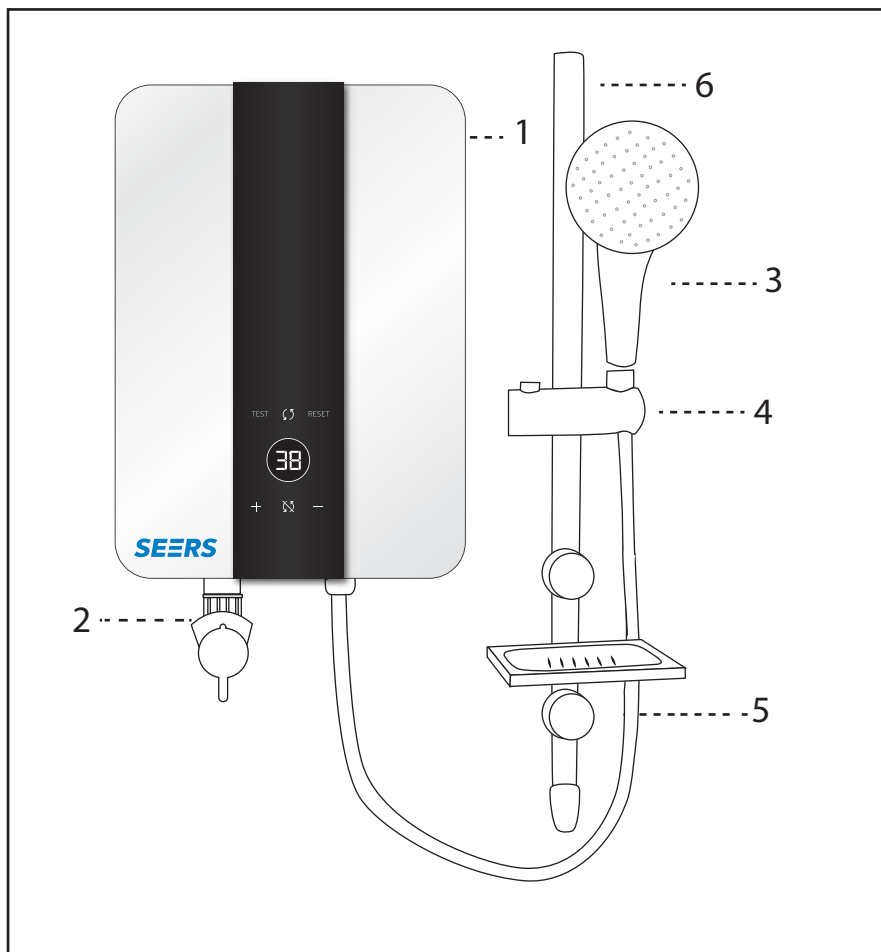
1 x Regulator Valve



1 x Rubber Hose

PART DESCRIPTION

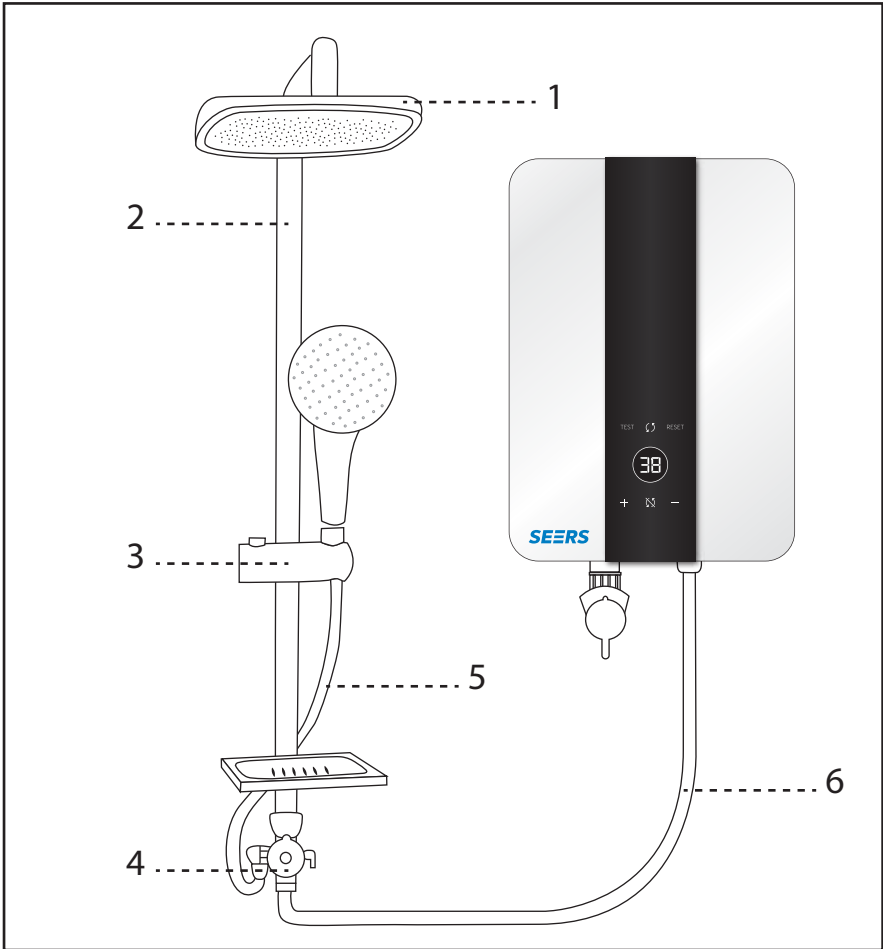
Model: R23RT , F23HT



1. AC Supply Cable Inlet
2. Regulator Valve (water Inlet)
3. Hand Shower
4. Shower Holder
5. Hose
6. Sliding Bar

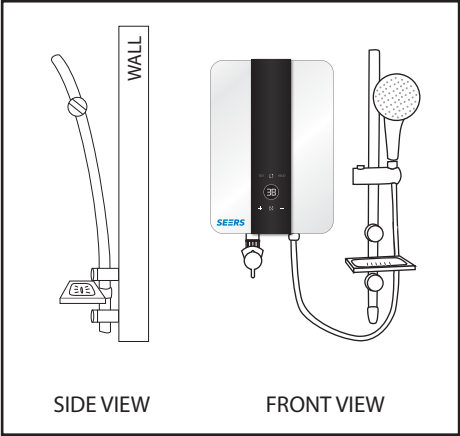
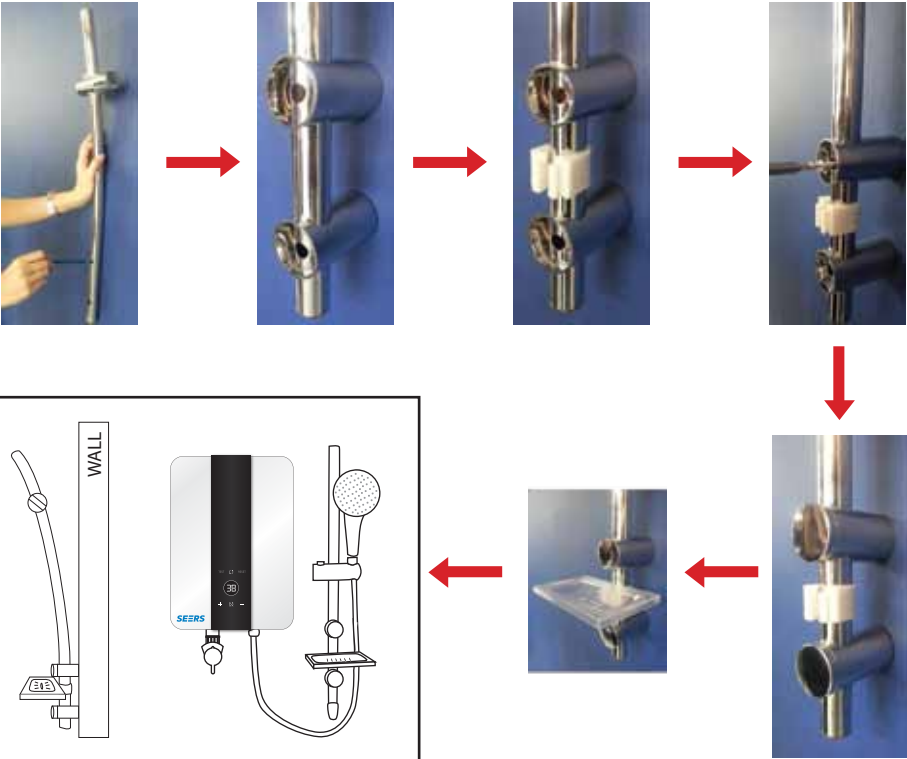
PART DESCRIPTION

Optional with Rain Shower



1. Rain Shower Head
2. Rain Shower Sliding Bar
3. Shower Holder
4. 3way Diverter Valve
5. Hose
6. Hose

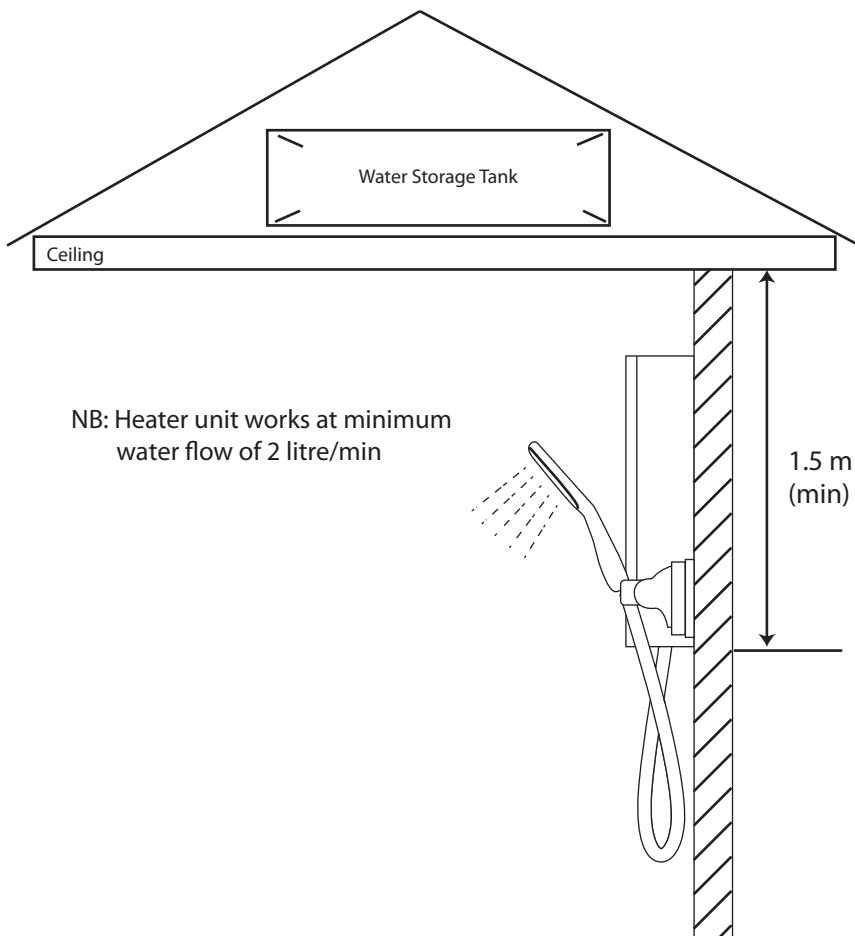
HAND SHOWER INSTALLATION GUIDE



WATER REQUIREMENTS

Plumbing Schematic Diagram

Seers Eco Instant Water Heater can be fitted in your home regardless of the the type of plumbing system as in most cases they can operate directly off main cold water supply.



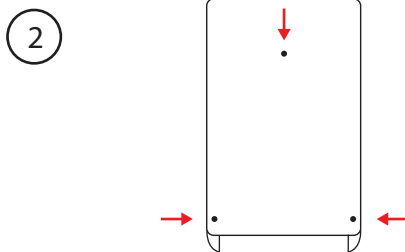
INSTALLATION

The installation of the product must comply to national guidelines for electrical wiring in residential buildings.

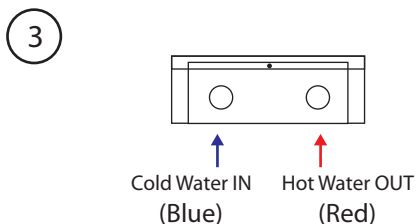
1) Unfasten the screw at the bottom to remove front cover.



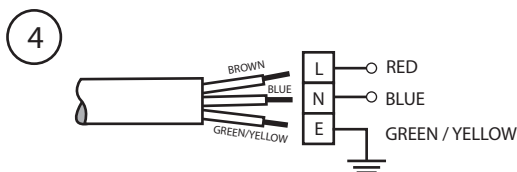
2) Drill hole on wall to mount heater according to hole position.



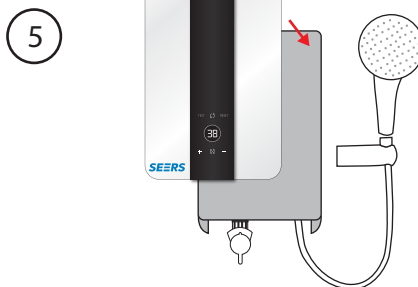
3) Affix flexible hose at outlet (red) and cold water supply to inlet (blue).



4) Connect AC Supply cable to terminal blocks.



5) Fix front panel and fasten screw.



OPERATING MODE



Earth point must be connected to grounding source

STEP 1: Switch ON MAIN AC SUPPLY (white indicator light ON)

STEP 2: Press + or - button activate heating.

P0 = Off

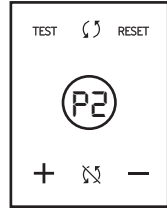
P1 = Low Temperature

P2 = Medium Temperature

P3 = High Temperature

STEP 3: Turn ON water supply.

STEP 4: For R23RT, pump operation is default, press Φ to off pump. Press 'pump' to activation if needed.

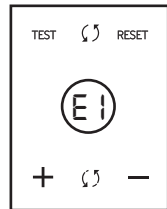


Remarks: Without water supply will stop the heating system and pump operation.

TESTING THE Residual Current Device (RCD)

STEP 1: Press TEST button to test bulid in RCD. Display E1 on screen.

STEP 2: Press RESET to reset the system and back to normal operation.



Remarks: As long as incoming main supply is present, the white indicator light is ON.

MODEL SPECIFICATION

Model Specification / Description	F23HT	R23RT
Overtemp cutoff	Yes	Yes
Water flow sensor	Yes	Yes
Easyfit mounting	Yes	Yes
Leakproof heat module	Yes	Yes
Adjustable temperature	Yes	Yes
Heating element	No	No
Installation:		
Shower holder set	Yes	Yes
Hand shower set	Yes	Yes
Rain shower set	Optional	Optional
Pump	No	Yes
Technical:		
Rated power	3.0 Kw	3.0 Kw
Rated voltage	220~240VAc/1phase	220~240VAc/1phase
Rated current	13 Amp	13 Amp
RCD Rated Trip Current	12mA	12mA
Connecting cable size	4.0mm ²	4.0mm ²
Output temperature	35°C ~ 45°C	35°C ~ 45°C
IP	IP25	IP25
Minimum Flow	2L/min	2L/min
Maximum Flow	6L/min	6L/min
Min Inlet Water Pressure (pascals)	100,000	100,000
Max Inlet Water Pressure (pascals)	350,000	350,000
Inlet and Outlet	BSP ½"	BSP ½"

Model	A-Wide (mm)	B-Length (mm)	C-Height (mm)
F23HT	65mm	222mm	367mm
R23RT	65mm	222mm	367mm

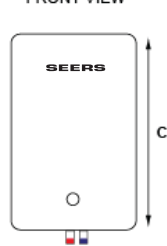
SIDE VIEW



BACK VIEW



FRONT VIEW



TROUBLESHOOTING

Please be assured that following situation is normal:

- 1) There will be a slight sound while the pump is in operation. (i.e model R23RT)
- 2) Water temperature will vary according to inlet water flow rate.

DESCRIPTION	POSSIBLE CAUSE	REMEDIES
Heater not operating	1) No Power Supply 2) Water shortage 3) Filter clogged	1) Check incoming power source 2) Check incoming water 3) Clean Filter
Water not hot	1) System trip 2) Heating position not set 3) Water flow rate too high	1) Press reset 2) Press + 3) Control water at regulator valve

Error Code		
E1	ELCB tripped	Press RESET button
E2	Overheat	Please refer to customer service /

SEERS MARKETING SDN BHD (917949-V)

No. 4, Jalan Utarid U5/18A, Seksyen U5,
40150 Shah Alam, Selangor Darul Ehsan,
Malaysia.

Tel: +603-7842 2871 Fax: +603-78439971

Email: sales@seers.com.my

Website: www.seers.com.my